

Interreg
Alpine Space



UNIVERSITY
OF TRENTO

eurac
research



A SPATIAL DECISION SUPPORT SYSTEM TO ESTIMATE THE THERMAL ENERGY DEMAND OF THE BUILDING STOCK AT REGIONAL SCALE

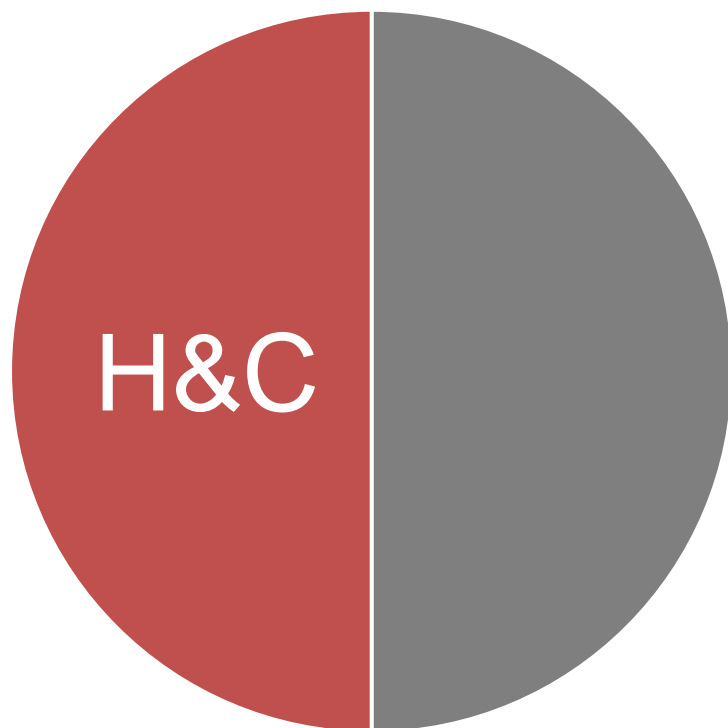
Valentina D'Alonzo^{1,2}, Pietro Zambelli²

¹ University of Trento, Department of Civil Environmental and Mechanical Engineering

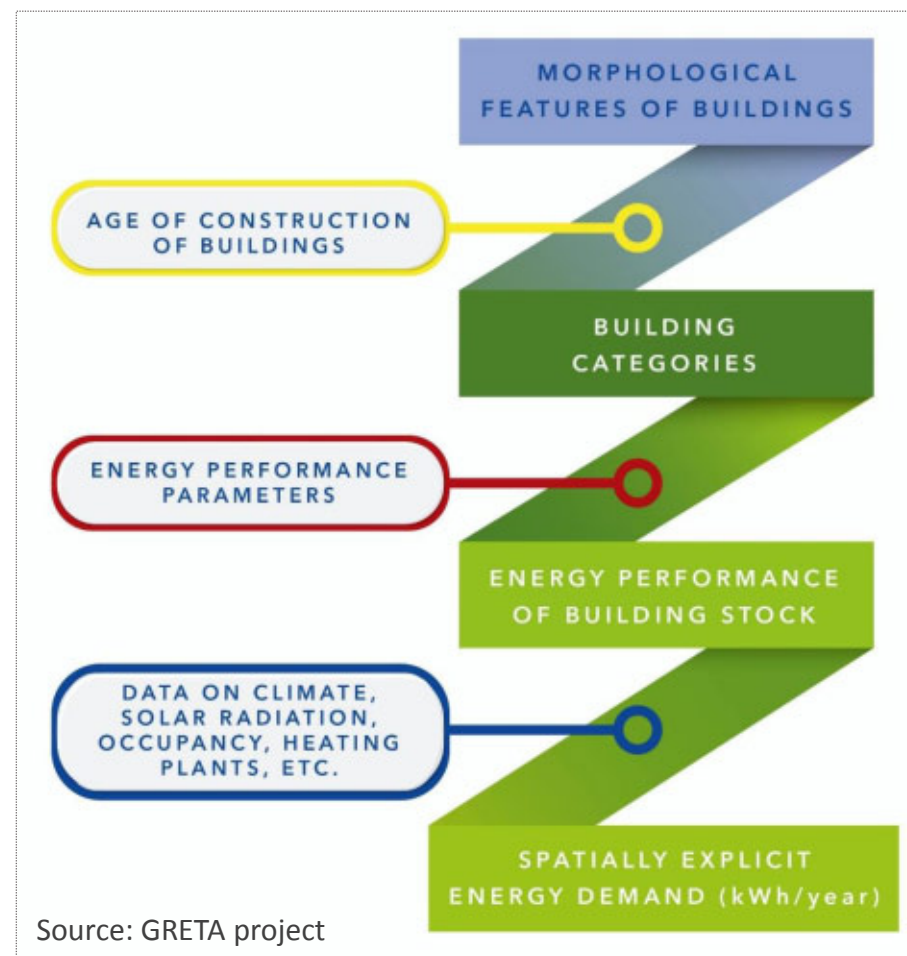
² Eurac Research, Institute for Renewable Energy, Urban and Regional Energy Systems team

WHY and WHAT

EU TOTAL ENERGY CONSUMPTION

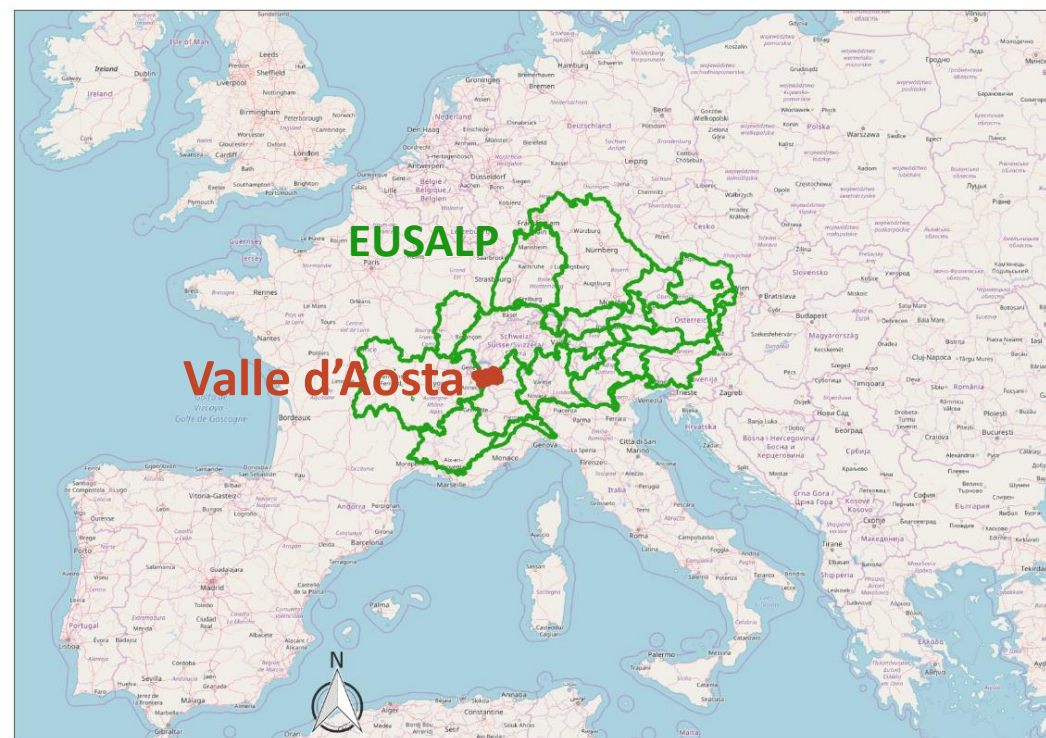
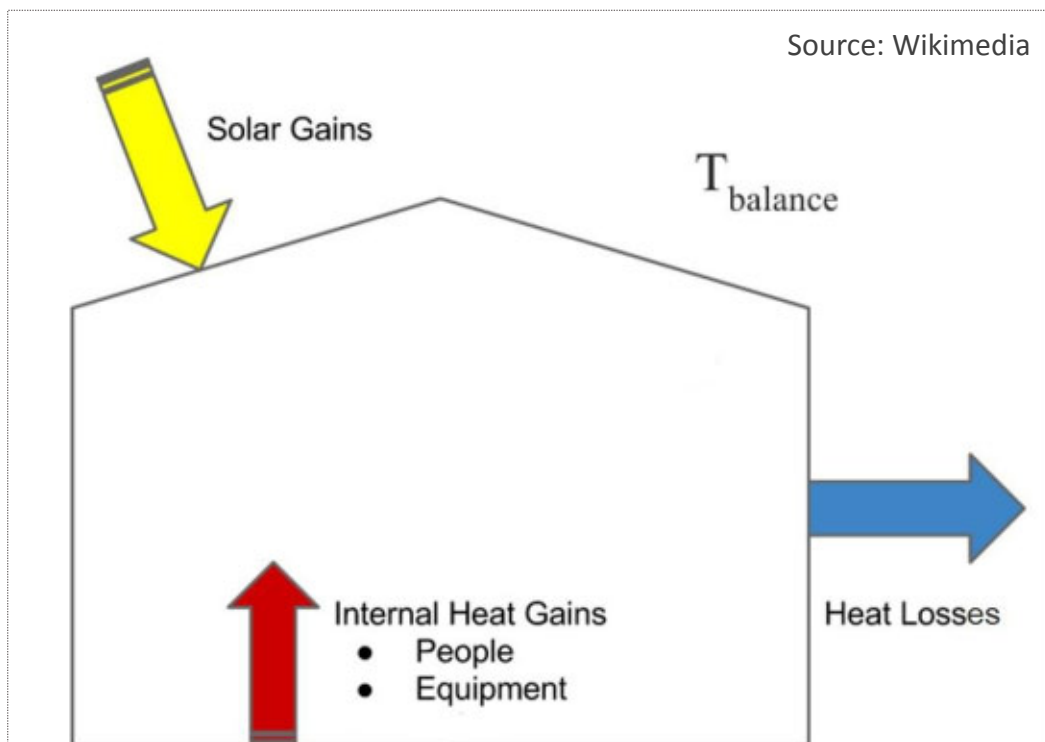


Source: own elaboration



Source: GRETA project

HOW and WHERE



Sources: own elaboration and OSM



GRASS GIS



QGIS

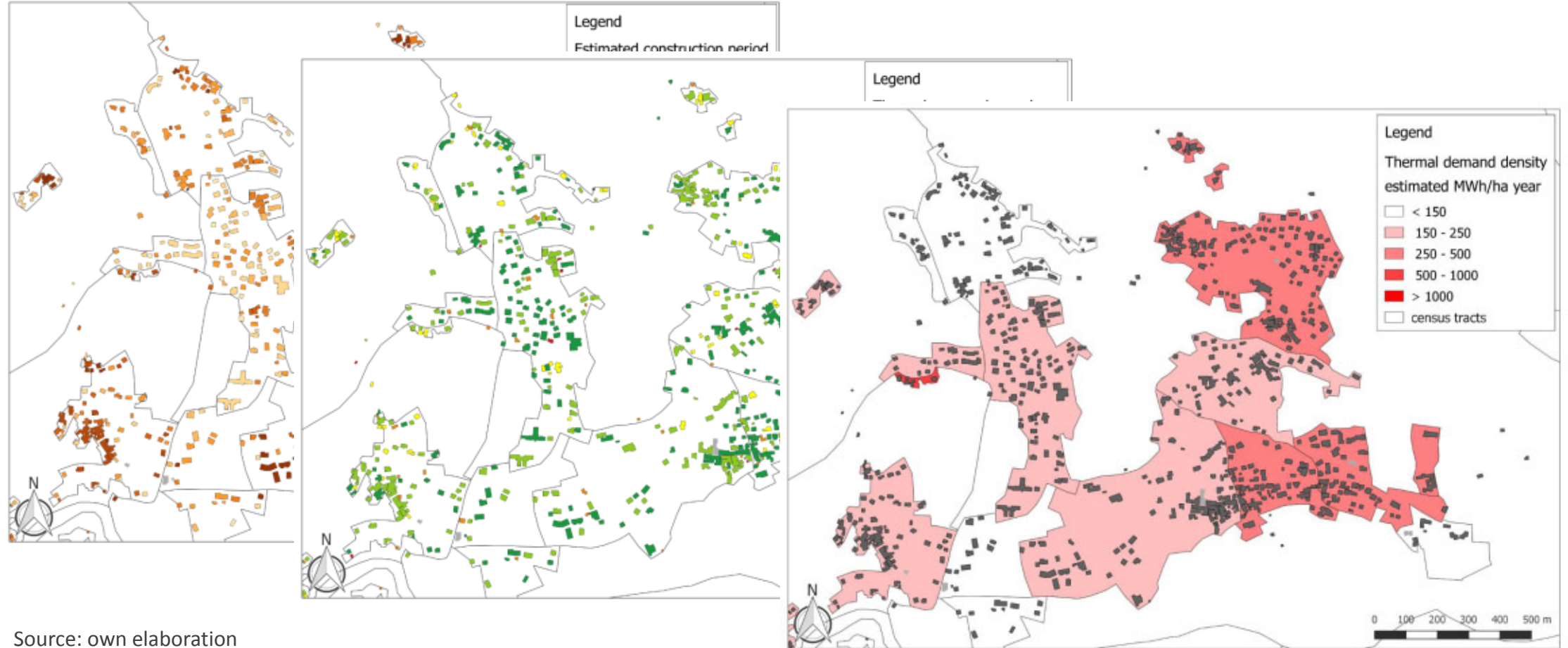


python



R Studio

OUTPUTS



Source: own elaboration