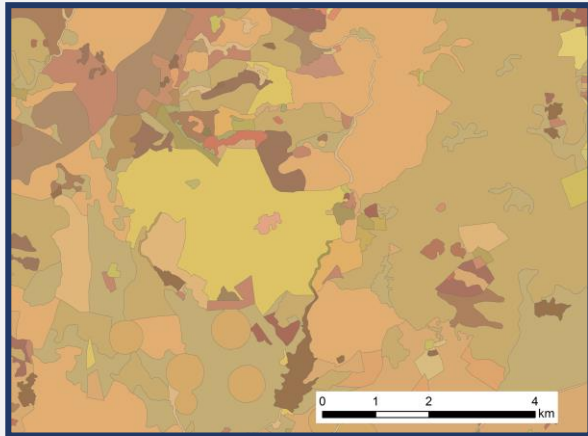
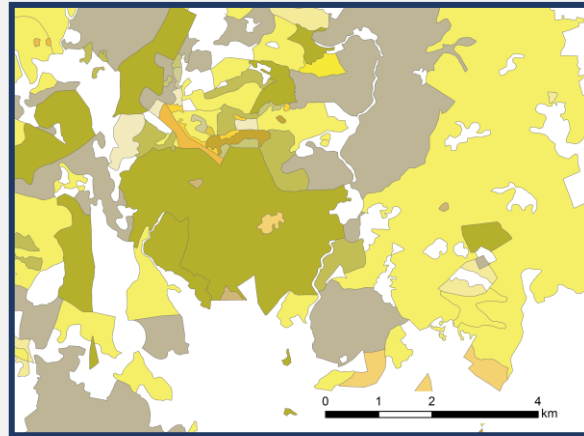


GIS BASED ANALYSIS OF POTENTIAL FOREST RESIDUES FOR ENERGY IN ALENTEJO, PORTUGAL

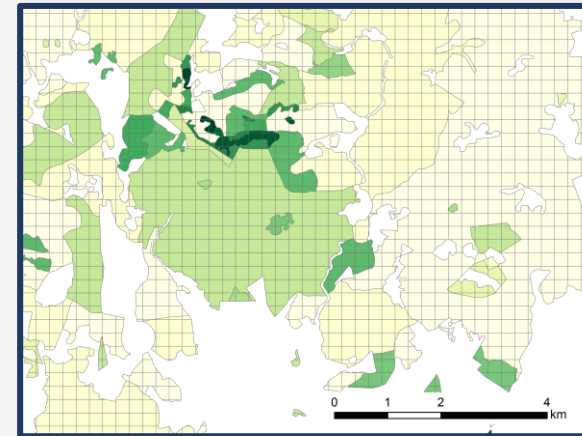
Land cover map



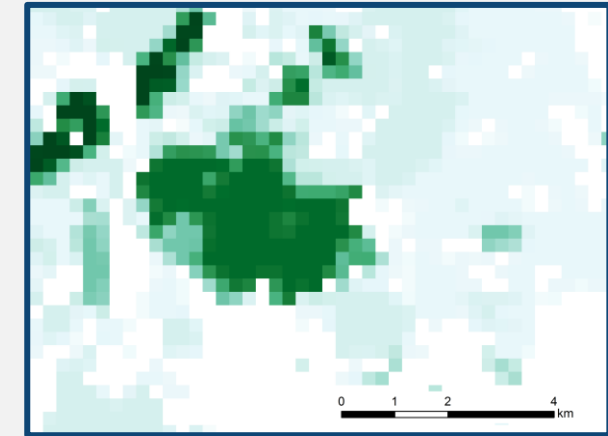
Forest types



250 m cell size grid



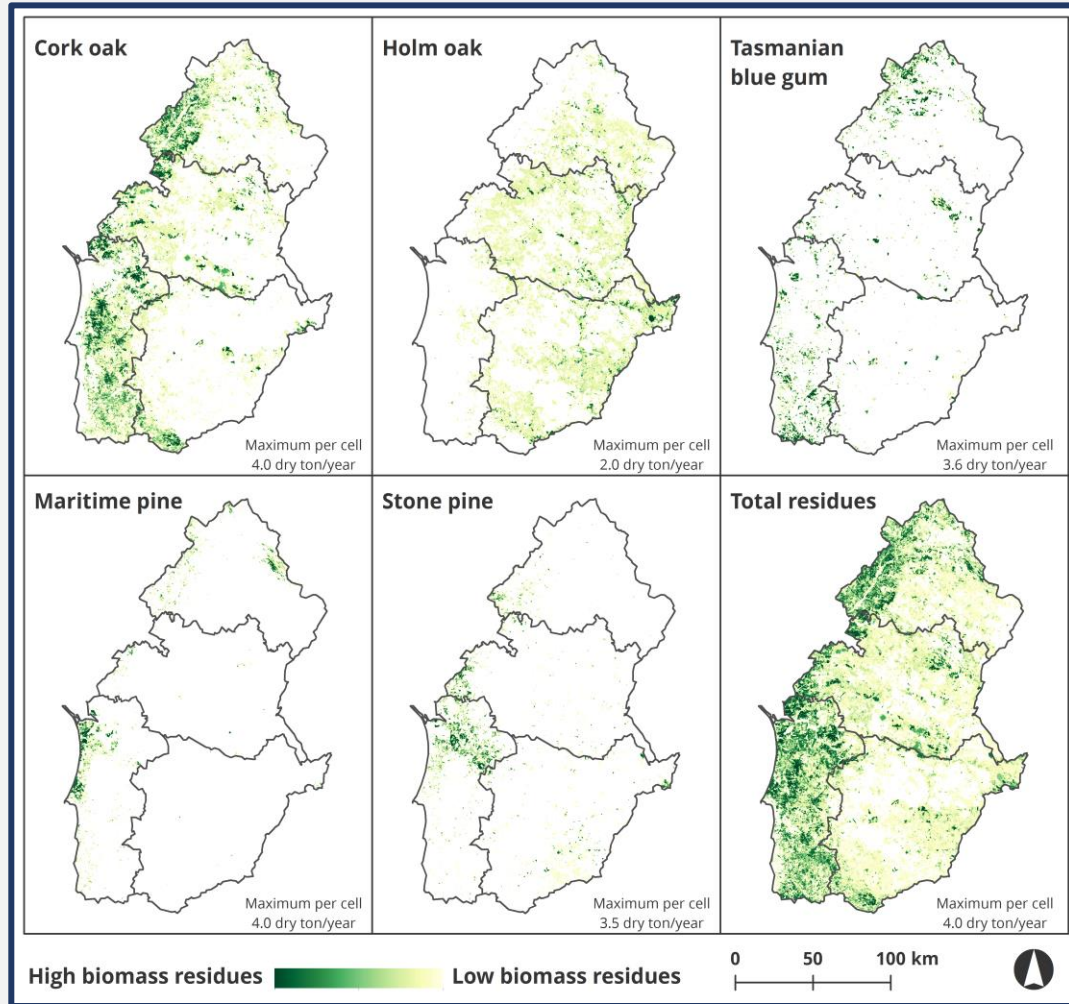
Potential biomass residues



Classes related with forest are reclassified in forest types that aggregate information about **species type** (hardwood/softwood), **forest composition** (pure/mixed) and **forest structure** (open/closed)

A grid is created and for each cell, the forest residues are calculated based on **specific characteristics of the forest types**, and residues rate production for each forest species in analysis.

GIS BASED ANALYSIS OF POTENTIAL FOREST RESIDUES FOR ENERGY IN ALENTEJO, PORTUGAL



Spatial distribution of potential forest residues in Alentejo

