

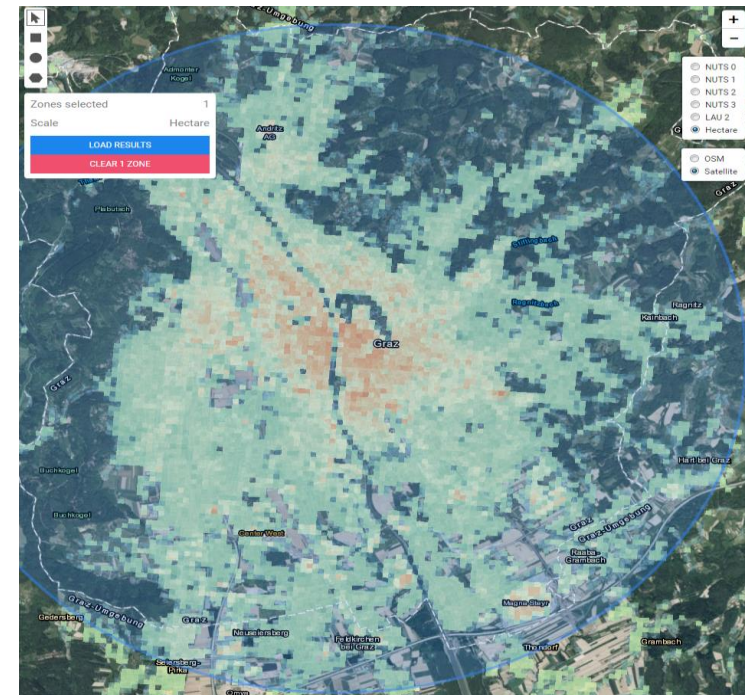


A European Heat Density Map

developed in the course of the
Hotmaps - project

Andreas Müller

ISEC 2018 Conference
Oct., 3rd 2018, Graz





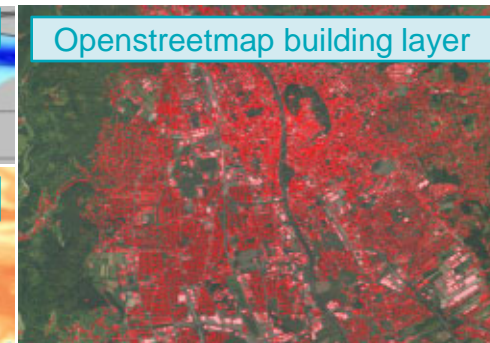
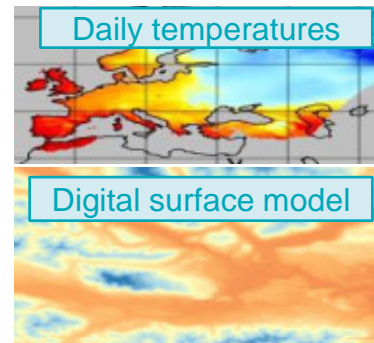
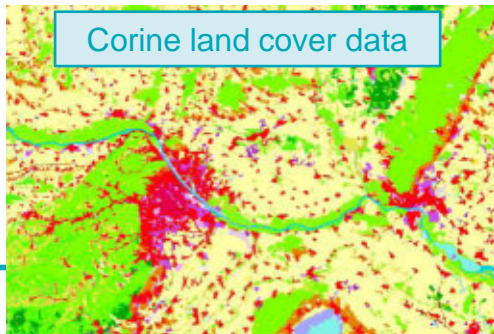
A European Heat Density Map – what for?

- **Hotmaps develops**, demonstrate and disseminate **a toolbox to support** public authorities, energy agencies and planners **in strategic heating and cooling planning** at local, regional and national levels.
- The open-data default top-down derived dataset for all EU28 countries on a hectare (100x100m) level, lays the foundation for the Hotmaps tool.



Key input data

- The datasets builds on **statistical data of the national / NUTS3 buildings stock**. The resulting final energy demand is calibrated to the national energy balances.
- **Spatial data**, such as **population and value added** a long with **data extracted from satellite images** such as building footprint, land sealing rates, elevation or Corine land cover data and building data from the **openstreetmap database** are used to transfer the national / NUTS3 results an the local level.





Funded by the Horizon 2020 programme
of the European Union



Contact

Andreas Müller

e-think – energy research

mueller@e-think.ac.at

www.hotmaps-project.eu