

Reduction of co2-emissions within the gas sector by implementation of energy efficiency measures and renewable process heat



**0.2 % of gas that
passes through is
used for pre-heating
(0.5 .. 4 GWh/a)**

Dr.-Ing. Bastian Schmitt

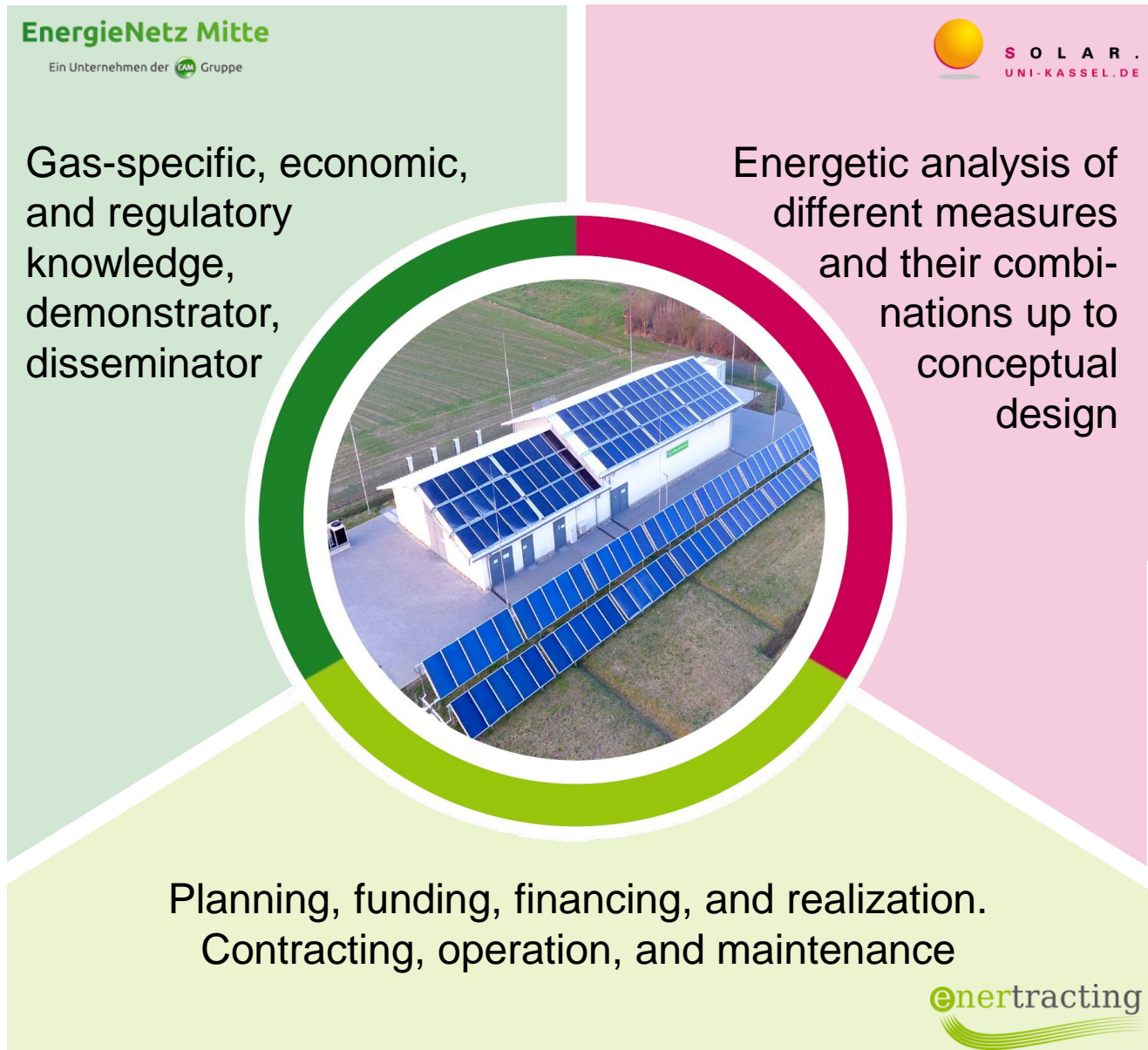
University of Kassel

Three complemented partners

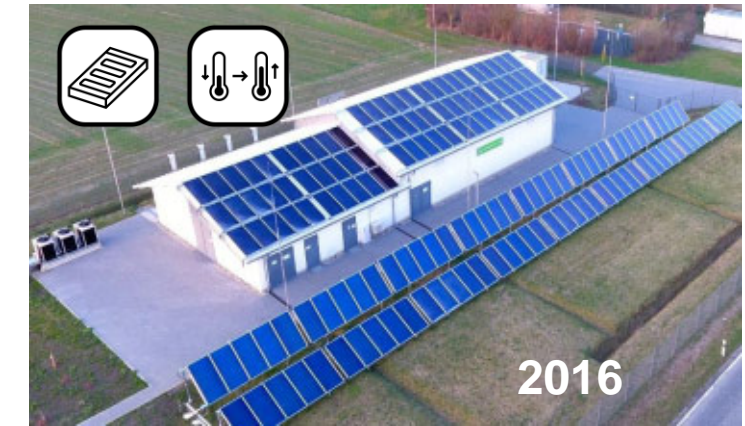
- Applied R&D
- Planning and realization
- Operation of GPRMS



Custom tailored holistic energy concepts for GPRMS



Realized and planned measures



R&D-Activities (new control system, sorption based ventilation, expansion turbine)

Realization phase

- Solar heating plant in combination with CHP and P2H (end 2018)
- Control optimization combined with solar heating plant with ETC (mid 2019)

Conceptual design phase

- Feasibility studies and pre-planning for eight GPRMS of three large gas utilities

bschmitt@uni-kassel.de